

SPANISH COURSES



SPANISH COURSES



To learn Languages

COURSES	ELE20 GLOBAL INTENSIVE	4
INTENSIVE ELE Español Lengua Extranjera	ELE25 CULTURAL INTENSIVE	5
	ELE10 GRAMMAR INTENSIVE	6
SPECIFIC COURSES	PRIVATE CLASSES	7
	DELE EXAM PREPARATION	7
	CLOSED GROUPS	7
ONLINE COURSES	BASIC ONLINE	8
	ONLINE + 5 ONLINE CLASSES	8
	ONLINE + 6 FACE TO FACE CLASSES	8
	ACCOMMODATION	9
	CCSE & DELE EXAM	10
	SOCIAL & CULTURAL ACTIVITIES	12
	USEFUL INFORMATION	12



CONCEPTS ASSOCIATED WITH THE CITY OF PALMA



SPANISH COURSES



To learn Languages

BCN Languages is a school with more than 20 years experience offering Spanish courses for foreigners in Palma. Throughout this time our school has continually updated itself, both at technical and academic levels, in order to offer our students the best quality teaching of Spanish in class, with small groups to allow for personalised monitoring of each student.

At BCN Languages, students find an agreeable and homely atmosphere, so as to make them feel comfortable in Palma, even though they are far from their country. This allows students to learn Spanish and enjoy the city in the best conditions. This is thanks to a competent and professional team of teachers, and to the administrative staff, as well as a teaching plan geared towards reaching each student's objectives.

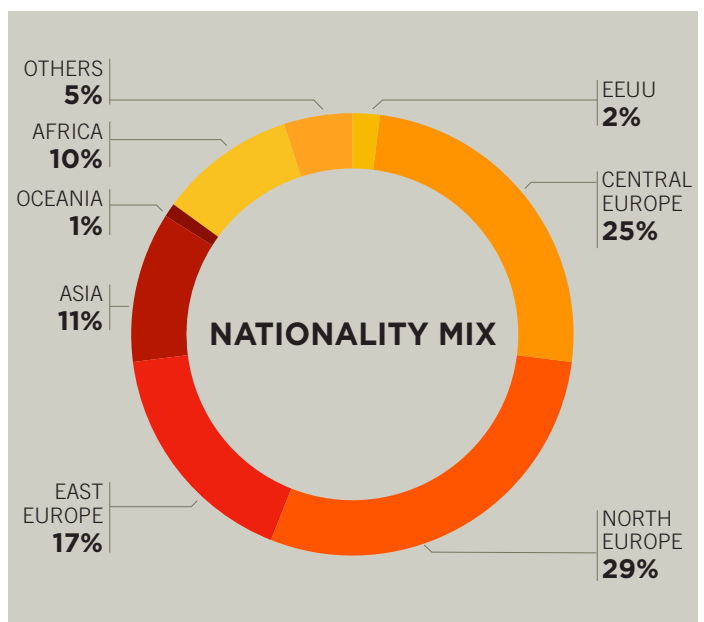
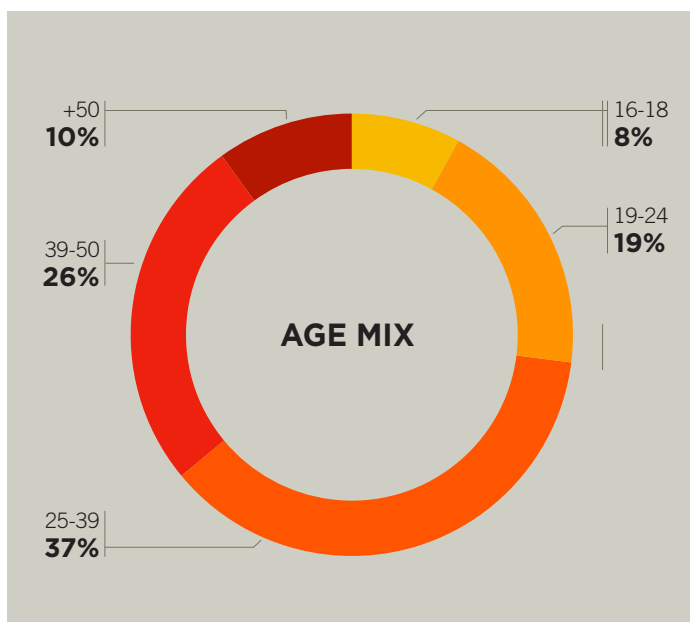
The 4 foundations of our school are:

1 The quality of the teaching team: all our teachers are graduates, and qualified to teach Spanish to foreigners, combined with teaching experience of between five and twelve years.



2 Personalised attention towards students: the staff at BCN Languages work hard to advise each student according to their individual needs and objectives. For us it is fundamental that their stay in the school and Palma be as agreeable and enriching as possible, helping them with the day-to-day as much as possible.

3 Our Teaching Plan: our school has a rigorously designed program for each level with clear objectives for every course according to the CEFR. End of course evaluations provide students with an assessment what they have learnt and a Language Certificate accredits this knowledge.



ELE SPANISH COURSES



To learn Languages

ELE20 GLOBAL INTENSIVE

The ELE20 Global Intensive course is directed at people who want to acquire knowledge of the Spanish language quickly. It is ideal for foreigners who are beginning to study Spanish in Palma, or need to improve in order to live, study or work in Spain.

This Spanish Intensive Course consists of 4 hours of class every day divided into two complementary sessions: Communicative Grammar and Conversation & Vocabulary.

This course guarantees the practice of the 4 linguistic skills, (listening, reading, writing and speaking), as such it is the most appropriate course to progress correctly in all areas of the language. The level of each course is homogeneous. In order to guarantee this aspect all our students must first take the school's level test (free and with no obligation at www.bcnlanguages.co/test-de-nivel), in order to allow us to advise everyone correctly as to the most suitable program and level.

On completion of the course you obtain a Spanish Language Certificate based on the criteria of the CEFR (Common European Framework of Reference for Languages), and the Cervantes Institute's Curricular Plan, with the level obtained by the student in each of the linguistic competences.

TIMETABLE: Monday to Friday, from 09:30-13:30h.

DURATION: From 1 up to 48 weeks. Each level is completed in 4 weeks of class.

INTENSITY: 4 daily 55 minute lessons, 20 lessons per week.

START: Every Monday (except absolute beginners), see start dates in the ELE CALENDAR.

PRICE: Check in your School Center.



ELE SPANISH COURSES



To learn Languages

ELE10 GRAMMAR INTENSIVE

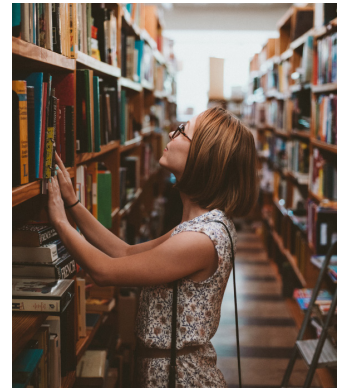
The ELE 10G Intensive Spanish Grammar Course is ideal for those people who want to revise or improve their Spanish grammar quickly and effectively with a communicative methodology.

On this course we work with the grammar in a communicative manner: we learn the grammar in real contexts, and with realistic spoken practice of the language.

We work in small groups in order to ensure suitable attention to each student, and to ensure everyone's participation in class.

A minimum level of A2 is required to do this course. In this course the grammatical content of a level is studied in 4 weeks.

On completion of the course you obtain a **Spanish Language Certificate** based on the criteria of the CEFR (Common European Framework of Reference for Languages), and the Cervantes Institute's Curricular Plan, with the level obtained by the student in each of the linguistic competences.



TIMETABLE: Monday to Friday, from 09:30-11:20h.

DURATION: From 1 up to 48 weeks.

INTENSITY: 2 daily 55 minute lessons, 10 lessons per week.

MINIMUM LEVEL: A2

START: Every Monday (see start dates in the ELE CALENDAR).

PRICE: Check in your School Center.



ELE SPANISH COURSES



To learn Languages

ELE10 CONVERSATION INTENSIVE

The objective of the ELE 10C Intensive Spanish Conversation Course is the practice of oral expression, learning new vocabulary, the correction of pronunciation and the use of grammar in speech.

The Spanish conversation courses are organised in small groups so as to get lots of participation from all the students and to guarantee personalised attention from the teacher towards all the students in the group. Conversation classes combine 3 key aspects: communicative interaction in all possible situations using the language, (individual expositions, conversation in pairs and as a group), learning new vocabulary, (related with the theme of the day in order to integrate it in context and help memorise it), and correction at the end of class.

The minimum level to do this course is A2.

On completion of the course you obtain a **Spanish Language Certificate** based on the criteria of the CEFR (Common European Framework of Reference for Languages), and the Cervantes Institute's Curricular Plan, with the level obtained by the student in each of the linguistic competences.



TIMETABLE: Monday to Friday, from 11:40 – 13:30h.

DURATION: From 1 up to 48 weeks.

INTENSITY: 2 daily 55 minute lessons, 10 lessons per week.

MINIMUM LEVEL: A2.

START: Every Monday, see start dates in the ELE CALENDAR.

PRICE: Check in your School Center.

SPECIFIC SPANISH COURSES



To learn Languages

PRIVATE CLASSES

Private Spanish classes for foreigners are ideal for planning a made to measure course according to the needs and objectives of each person.

The student decides the duration, timetable and the intensity of the course, as well as the academic program they want to work on. Once these parameters have been decided, the centre's academic coordinator will design a study plan in coordination with the teacher which responds to the student's expectations.

Those students interested in our private Spanish classes in Palma are not obliged to do the school's level test, but can use this service free and with no obligation in order to better comprehend their level of understanding of the language, as well as the recommendations of the head of studies regarding their initial objectives.

TIMETABLE AND DURATION:

To be determined by the student.

PRICE: Check in your School Center.

COURSES FOR CLOSED GROUPS

A closed group allows for flexibility regarding timetables and personalised treatment of students with the same level and objectives.

Closed groups have a maximum size of 10 students, and are available in all time slots between 08:00h and 22:00h. This type of course combines the advantages of private classes with the dynamism of group classes, with a private and qualified teacher.

The school offers tourist and cultural activities upon request, as well as accommodation with a host family and with half board.

If requested, on completion of the course we provide a Spanish language certificate based on the criteria of the CEFR.

TIMETABLE AND DURATION:

Depending on that requested.

PRICE: Check in your School Center. groups with a maximum of 10 students per level.

DELE PREPARATION COURSE

The objective of the DELE Exam Preparation Course is to prepare the student for the Diploma of Spanish as a Foreign Language in an intensive and effective manner in order to successfully pass this official exam.

On the DELE course we work on the structure of the exam, placing emphasis on the parts that normally cause most difficulty: oral and written expression, (grammar, spelling and text structure).

We prepare students for the **A2, B2 and C1 levels** in reduced size groups with a **maximum of 9 students** in order to guarantee personalised attention to each student.

DELE preparation course have a duration of **4 weeks**, and take place **before the DELE exam sessions of May, July and November**.

TIMETABLE: Consult in the school.

DURATION: 4 weeks.

INTENSITY:

Each course offers 2 modalities:

DELE A2: 6h / week

DELE B2 8h / week

DELE C1 8h / week



ONLINE SPANISH COURSES



To learn Languages

BASIC ONLINE COURSE (COURSE + TUTOR)

At BCN Languages we are committed to offering you the maximum flexibility in combination with the best pedagogic quality. With our online courses you will have access to a native teacher who will guide you as you learn and will evaluate your knowledge. We have a wide variety of Spanish courses. Enrol on the one you like most.

Also, with the methodology of our online courses you will work on the 4 skills: oral and written expression, and reading and listening comprehension. This way you will practice everything you need to learn the language and improve.

Each course corresponds to 60 – 80 hours work and you have up to 4 months to complete it. But remember, this is approximate as you have unlimited access, you mark the rhythm.

The online courses offer interactive activities, audios, videos and multiple resources. You will learn and practice from the very first day, at your own speed and according to our personal needs

TIMETABLE: 24h access to the platform.

DURATION: 4 months.

PRICE: Check in your School Center.

BASIC ONLINE COURSE + 5h OF ONLINE CLASSES (VIRTUAL PLATFORM)

This course allows you to complement your basic online course with private classes in a virtual platform, and so reach your linguistic goals with the support of a teacher.

TIMETABLE: 24h access to the platform + 5h of private classes at a time to be determined by the student.

DURATION: 4 months.

PRICE: Check in your School Center.

BASIC ONLINE COURSE + 6h OF PRIVATE FACE TO FACE CLASSES

At BCN Languages we help you achieve your objectives. For this reason, if you prefer the face to face support of a qualified native teacher this is your modality, as you will complement the basic online course with private face to face classes in any of our schools.

TIMETABLE: 24h access to the platform + 6h of private classes in the school at a time to be determined by the student.

DURATION: 4 months.

PRICE: Check in your School Center.



ACCOMMODATION



To learn Languages



At BCN Languages we not only offer the chance to do a Spanish course but also to reserve accommodation for students in Palma.

Our Spanish school makes quality, carefully selected accommodation that is regularly inspected at students' disposition. At BCN Languages we commit ourselves to providing our students with an excellent service, and to helping them find the accommodation that best fits their needs.

If you decide to contract student accommodation with us, you will have the security that all our families and flats are strategically located in the centre of Palma and near the school, with opportunities that allow students to submerge themselves in Spanish culture and make the most of their time in Palma.

HOST FAMILY

To live with a host family in Palma is an incredible opportunity to get to know the way of life, culture and the cuisine of our country while you practice the language.

All our host families have been carefully selected by the person in charge of accommodation, according to well defined criteria of quality, and they are all periodically checked on by school managers.

Students will have a fully furnished individual room and will be able to choose between half board (breakfast and dinner) or only breakfast.

Reservations of accommodation with host families in Palma normally run from the first Saturday before the start of the course through to the Saturday following the end of the course, (extra nights can be reserved if needed).



OFFICIAL EXAMS



To learn Languages

DELE

The Diploma of Spanish as a Foreign Language (DELE) is the only official diploma which accredits knowledge of the Spanish language internationally.

This diploma is awarded by the Cervantes Institute in the name of the Spanish Ministry of Education and Culture.

DELE diplomas have unlimited validity and are classified according to levels according to the directives of the CEFR (Common European Framework of Reference for Languages): **DELE A1, DELE A2, DELE B1, DELE B2, DELE C1 and DELE C2.**

BCN Languages prepares students for the exam with its DELE preparation courses.

Enrolment for DELE exams and the payment of fees is done on the web <https://examen.es.cervantes.es/> where you can select the date and location for the exam.

CCSE

BCN Languages is one of the examination centres for the tests necessary for the **concession of Spanish nationality.**

According to the two laws passed in 2015 relative to the processes necessary to obtain Spanish nationality, two of the prerequisites are to pass two tests administered by the Cervantes Institute.

1. The **DELE diploma, A2 or higher**: which accredits basic knowledge of the Spanish language, (only for non Spanish speakers).
2. **CCSE**: test of constitutional and socio-cultural knowledge of Spain, this validates knowledge of the Spanish constitution as well as of culture and the social reality.

Enrolment for CCSE exams and the payment of fees is done on the web <https://examen.es.cervantes.es/> where you can select the date and location for the exam.

LEVELS

DELE A1	DELE A2	DELE B1	DELE B2	DELE C1	DELE C2
---------	---------	---------	---------	---------	---------



SOCIO CULTURAL ACTIVITIES & EXCURSIONS



To learn Languages

The Cathedral of Santa María (La Seu)

This majestic Gothic construction, located in front of the sea, is the symbol of the city.



Bellver Castle

Situated on a hill, this circular castle offers one of the best views of Palma and its bay.



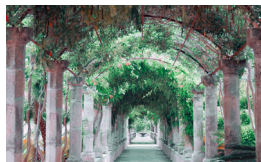
El Poble Espanyol

This open-air museum brings together representative buildings and traditions from various parts of Spain.



S'Hort del Rei gardens

Its fountains, ponds and a wide variety of Mediterranean plants, offer unparalleled peace in the heart of the city.



Es Baluard Museum of Modern Art

A space that houses a wide collection of local and international artists.



l'Olivar Market

Is the nerve center for fresh products in Palma. You will find everything from fish and seafood fresh from the coast to local fruits and vegetables.



Santa Caterina neighborhood

Full of bars, restaurants and designer shops, has a bohemian feel that makes it the perfect place to spend an afternoon or evening.



Port of Palma and Promenade

Enjoy the views of the yachts and boats, while you walk among palm trees. You will also find restaurants where you can taste fresh seafood.



Juan March Foundation Museum

This museum houses a collection of contemporary art, with works by artists such as Picasso, Dalí, Miró and Tàpies.



Gènova Caves

On the outskirts of Palma, this complex system of caves offers a tour of impressive formations of stalactites and stalagmites.



Boat route along the coast of Palma

One of the best ways to see Palma from another perspective is to take a boat tour along its coast.



Plaza Mayor and its terraces

It is the perfect place to enjoy the local atmosphere and take a break on your tour of Palma.



USEFUL INFORMATION

TIMETABLES IN PALMA

Lunchtime is between 14:00 and 15:00h and dinner around 21:00 / 21:30h. If you want to eat in a restaurant or bar you need to plan around these times. If not, they may not serve you when you want.

The majority of shops located in the city centre and shopping centres open from 10:00h to 21:00h, while small shops normally close between 14:00 – 17:00h.

Supermarkets open from 09:00 till 21:00h. **MARKETS** are very important places for people from Palma. Each city neighbourhood has one. They are all covered markets, and some of them are located in beautiful modernist buildings. They open in the mornings, and some days also in the afternoons. There you can find top quality fresh produce: fish, meat, fruit and vegetables.

TRANSPORT IN PALMA

Palma is a city for walking: you can stroll around and get lost in its streets. When you are tired, feel lazy or are in a hurry, you can choose between the following means of transport.

Transport: <https://mobipalma.mobi/mobilitat/transport/>

Urban bus: <https://www.emtpalma.cat/es/inicio>

interurban bus: <https://www.tib.org/es/inicio>

SPANISH COURSES



BCN LANGUAGES PALMA

+34 971 72 0643

Av. d'Alemanya, 3

07003Palma

palma@bcnlanguages.com

<https://www.bcnlanguages.com/palma/>

www.bcnlanguages.com

PRUEBA
CCSE

